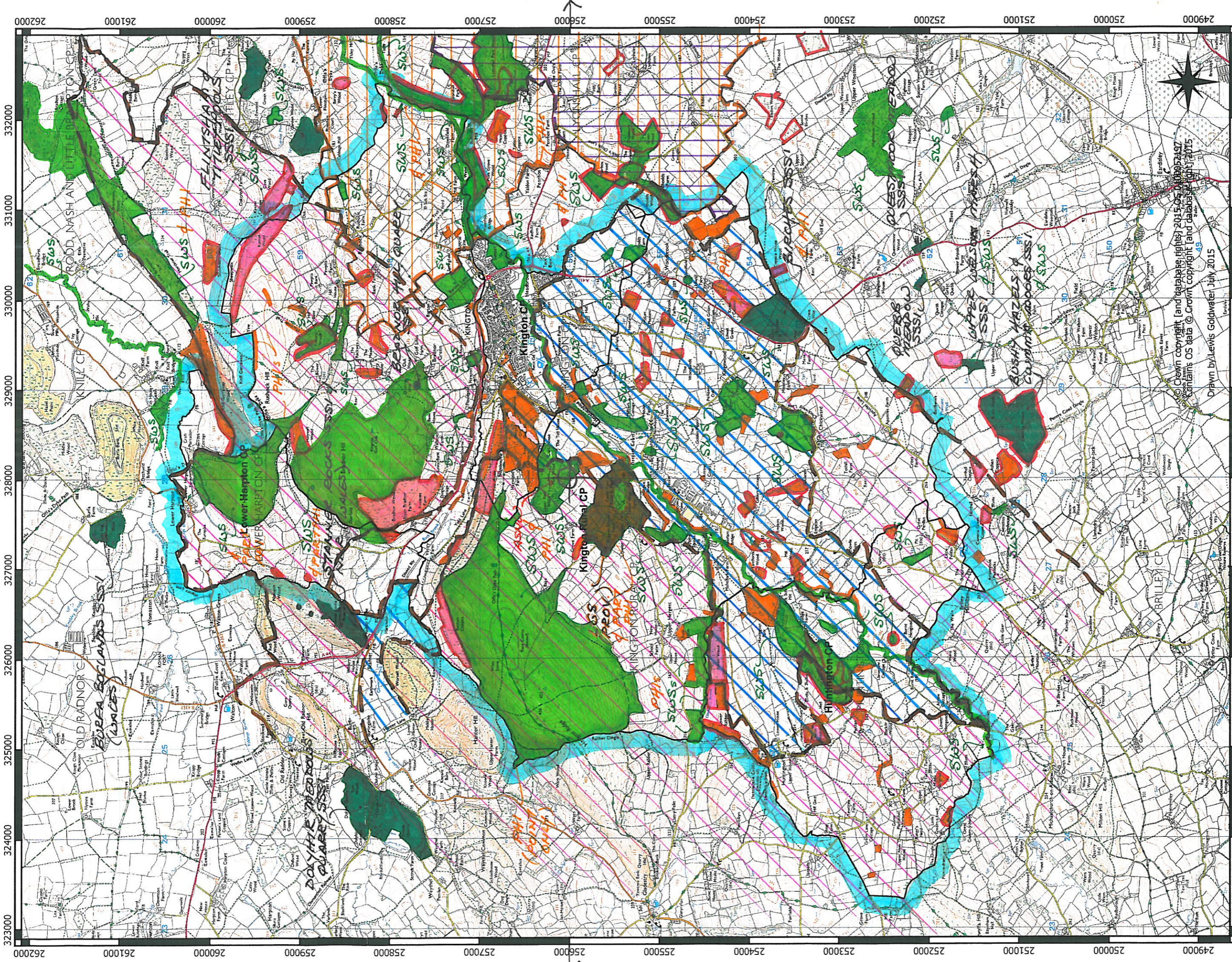


BIODIVERSITY



County / LOCAL =

INTERNATIONAL / NATIONAL =

(NVR, SPA, SAC, SSSI ETC)

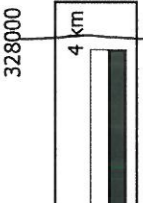
Produced at scale 1:36,264 on A3

BIODIVERSITY - / - (incl. replaced)

- LGS
- PH1
- ASNW

* NB MOST OF STUDY AREA LIES WITHIN VARIOUS SSSI IMPACT RISK ZONES: NOT MARKED. REFER DEFRA 'MAGIC' FOR DETAILS + LOCATIONS

SDA // DA // NVZ: SW // NVZ: GW



© Crown copyright (land database rights) 2015 OS. Ordnance Survey contains OS data © Crown copyright (land database rights) 2015

Drawn by Lewis Goldwater July 2015